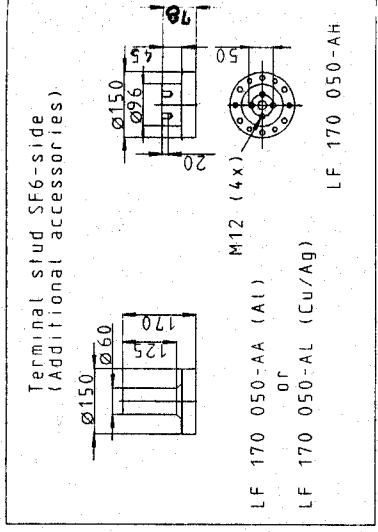
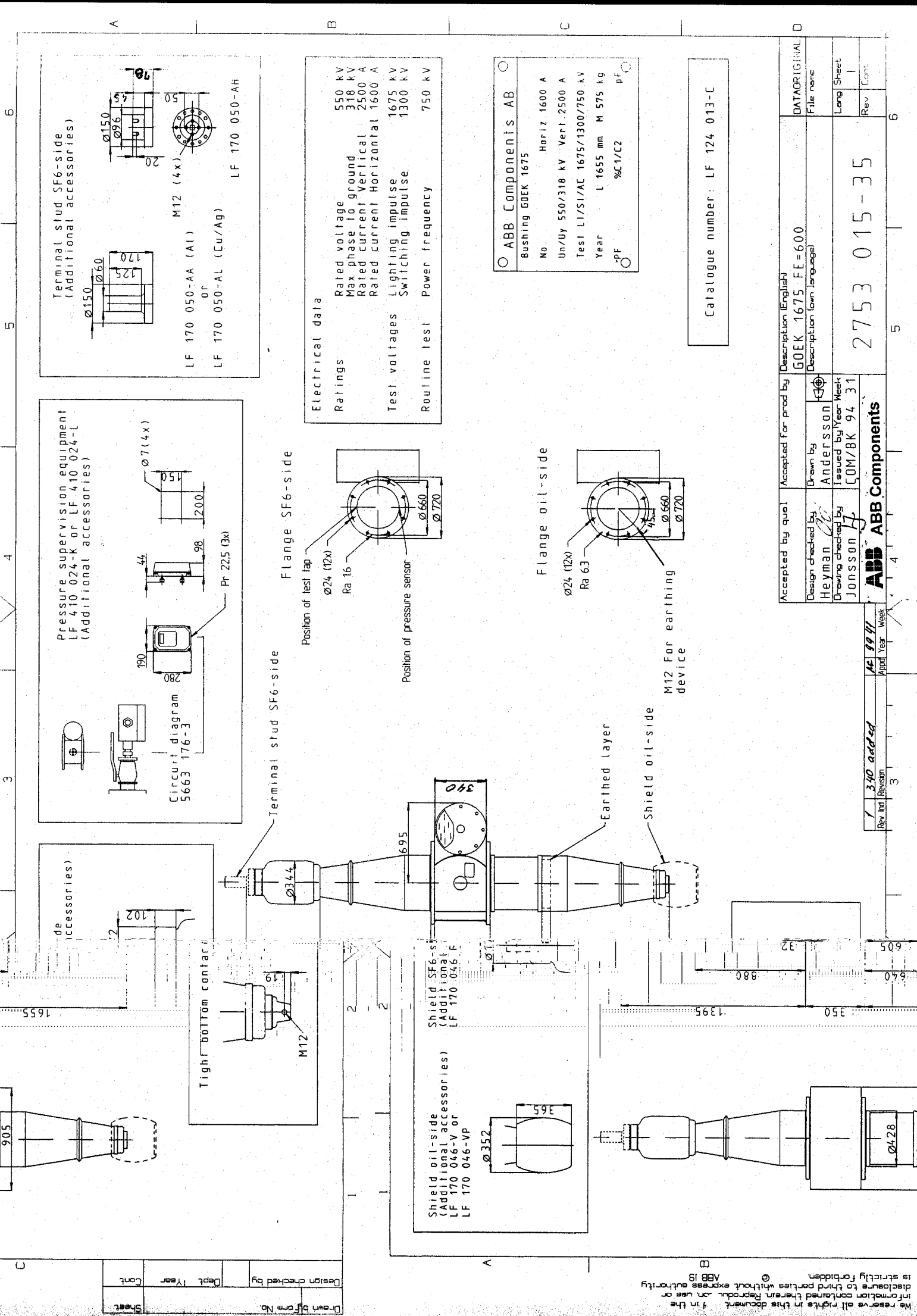


Drawn by	Form No.
Design checked by	Dept.
Year	Cont.
Sheet	

We reserve all rights in this document. If the information contained therein is reproduced or used for disclosure to third parties without express authority is strictly forbidden.

ABB 19



Electrical data

Ratings	Rated voltage	550 kV
	Max phase to ground	318 kV
	Rated current Vertical	2500 A
	Rated current Horizontal	1600 A
Test voltages	Lighting impulse	1675 kV
	Switching impulse	1300 kV
Routine test	Power frequency	750 kV

ABB Components AB

Bushing	608EK 1675
No.	Horiz. 1600 A
Un/uy	550/318 kV Vert. 2500 A
Test	L1/S1/AC 1675/1300/750 kV
Year	L 1655 mm M 575 kg
-PF	%C1/C2
	PF

Catalogue number: LF 124 013-C

Accepted by	quol	Accepted for prod by	Description (English)	DATA ORIGINAL
Design checked by	Heyman	Drawn by	GOEK 1675 FE=600	File name
Drawing checked by	JONSSON	Issued by	Description (own language)	
		Year		
		Week		
		Month		
		Day		
		Year		
		Week		
		Month		
		Day		
		Year		
		Week		
		Month		
		Day		
		Year		
		Week		
		Month		
		Day		
		Year		
		Week		
		Month		
		Day		
		Year		
		Week		
		Month		
		Day		
		Year		
		Week		
		Month		
		Day		
		Year		
		Week		
		Month		
		Day		
		Year		
		Week		
		Month		
		Day		
		Year		
		Week		
		Month		
		Day		
		Year		
		Week		
		Month		
		Day		
		Year		
		Week		
		Month		
		Day		
		Year		
		Week		
		Month		
		Day		
		Year		
		Week		
		Month		
		Day		
		Year		
		Week		
		Month		
		Day		
		Year		
		Week		
		Month		
		Day		
		Year		
		Week		
		Month		
		Day		
		Year		
		Week		
		Month		
		Day		
		Year		
		Week		
		Month		
		Day		
		Year		
		Week		
		Month		
		Day		
		Year		
		Week		
		Month		
		Day		
		Year		
		Week		
		Month		
		Day		
		Year		
		Week		
		Month		
		Day		
		Year		
		Week		
		Month		
		Day		
		Year		
		Week		
		Month		
		Day		
		Year		
		Week		
		Month		
		Day		
		Year		
		Week		
		Month		
		Day		
		Year		
		Week		
		Month		
		Day		
		Year		
		Week		
		Month		
		Day		
		Year		
		Week		
		Month		
		Day		
		Year		
		Week		
		Month		
		Day		
		Year		
		Week		
		Month		
		Day		
		Year		
		Week		
		Month		
		Day		
		Year		
		Week		
		Month		
		Day		
		Year		
		Week		
		Month		
		Day		
		Year		
		Week		
		Month		
		Day		
		Year		
		Week		
		Month		
		Day		
		Year		
		Week		
		Month		
		Day		
		Year		
		Week		
		Month		
		Day		
		Year		
		Week		
		Month		
		Day		
		Year		
		Week		
		Month		
		Day		
		Year		
		Week		
		Month		
		Day		
		Year		
		Week		
		Month		
		Day		
		Year		
		Week		
		Month		
		Day		
		Year		
		Week		
		Month		
		Day		
		Year		
		Week		
		Month		
		Day		
		Year		
		Week		
		Month		
		Day		
		Year		
		Week		
		Month		
		Day		
		Year		
		Week		
		Month		
		Day		
		Year		
		Week		
		Month		
		Day		
		Year		
		Week		
		Month		
		Day		
		Year		
		Week		
		Month		
		Day		
		Year		
		Week		
		Month		
		Day		
		Year		
		Week		
		Month		
		Day		
		Year		
		Week		
		Month		
		Day		
		Year		
		Week		
		Month		
		Day		
		Year		
		Week		
		Month		
		Day		
		Year		
		Week		
		Month		
		Day		
		Year		
		Week		
		Month		
		Day		
		Year		
		Week		
		Month		
		Day		
		Year		
		Week		
		Month		
		Day		
		Year		
		Week		
		Month		
		Day		
		Year		
		Week		
		Month		
		Day		
		Year		
		Week		
		Month		
		Day		
		Year		
		Week		
		Month		
		Day		
		Year		
		Week		
		Month		
		Day		
		Year		
		Week		
		Month		
		Day		
		Year		
		Week		
		Month		
		Day		
		Year		
		Week		
		Month		
		Day		
		Year		
		Week		
		Month		
		Day		
		Year		
		Week		
		Month		
		Day		
		Year		
		Week		
		Month		
		Day		
		Year		
		Week		
		Month		
		Day		
		Year		
		Week		
		Month		
		Day		
		Year		
		Week		
		Month		
		Day		
		Year		
		Week		
		Month		
		Day		
		Year		
		Week		
		Month		
		Day		
		Year		
		Week		
		Month		
		Day		
		Year		
		Week		
		Month		
		Day		